



Colors
that make
our  ENVIRONMENT
GREEN

shadebook
VOL - IV





LETS GO **ECO-FRIENDLY**

Fashion, Cuisine and Environment are the things that can never be compromised. Give your clothes and our planet a new life by replacing traditional yarn with our Unique, Eco-Friendly, Sustainable Yarns made from Recycled PET Bottles and Cotton coming from pre-consumed garment waste.

Give our children a better Tomorrow!

PRODUCT RANGE

Count Range : Ne 20/1 to Ne 50/1

- ⦿ 100% Cotton Melange Yarn
- ⦿ Cotton/Polyester Melange Yarn
- ⦿ Cotton/Polyester/Viscose Melange Yarn
- ⦿ Modal Blended Melange Yarn
- ⦿ Modal Tri blend Melange Yarn
- ⦿ Linen Blended Melange Yarn
- ⦿ Viscose Blended Melange Yarn
- ⦿ Lurex Blended Melange Yarn
- ⦿ Jasper/Grindle Melange Yarn
- ⦿ Injection Slub Melange Yarn
- ⦿ All Kinds of Melange Fancy Yarns
Organic/BCI/Fair Trade/GRS
Certified Melange Yarns



CLUSTER

with **SNOW** LOOK

Created natural colour clusters with cloudy dusty looks to resemble beauty of nature.

This can be offered with natural cotton blended with polyester fibres. Cotton 60% / Polyester 40% and Cotton 50% / Polyester 50% can be offered. Customer can simply knit the fabric and do the washing process. Base and streaks could be choice of customers. Count can be offered from Ne 16/1 to Ne 40/1.





YARN QUALITY

MELANGE/HEATHER YARN



COUNT (Ne)

30/1



PROCESS

WASHING



BLEND

COTTON 60%/POLYESTER 40%

SCSM 22411



SCSM 22412



SCSM 22413



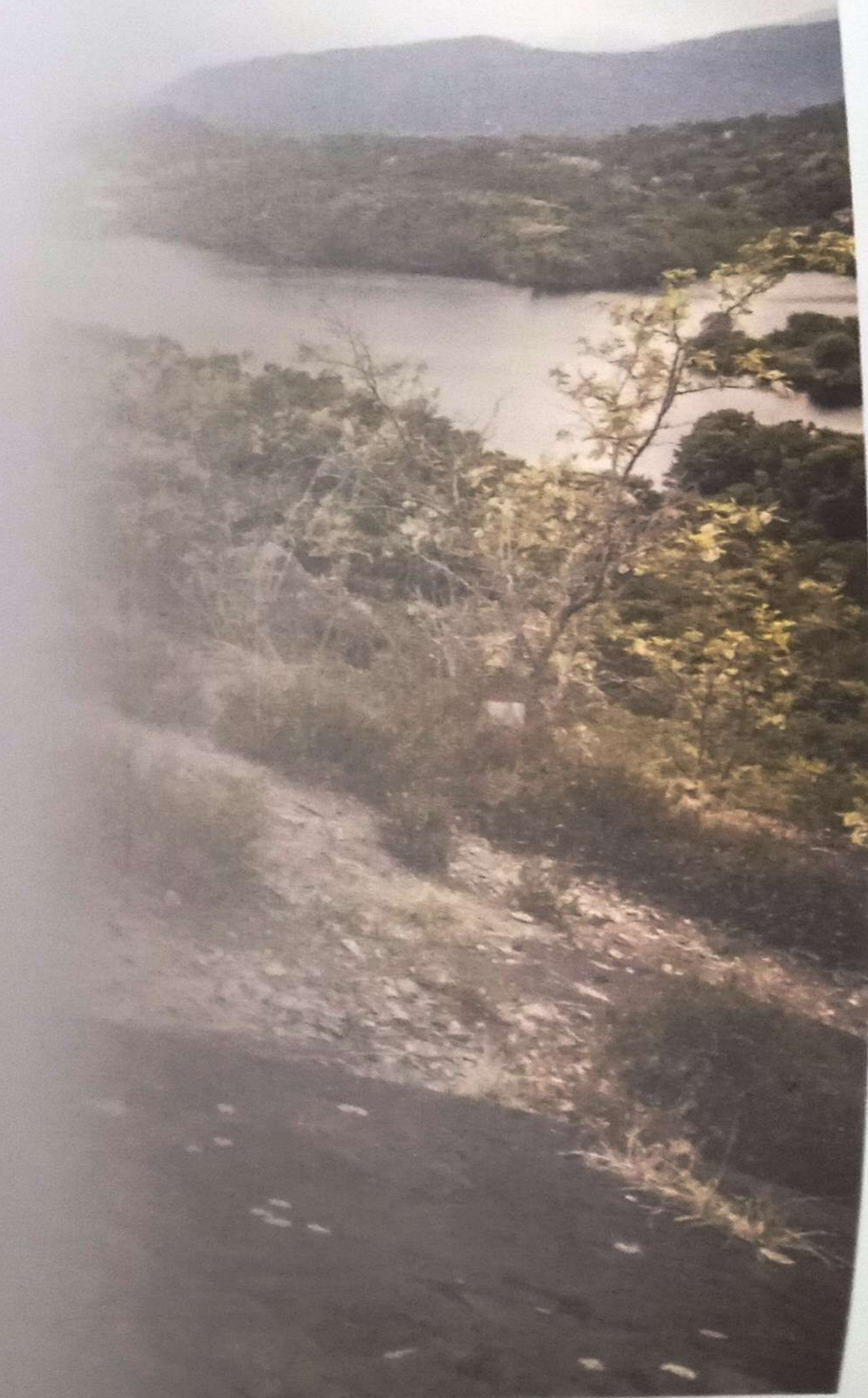


DRIZZLE LOOK

Natural Contrasts

A natural contrast shade appearance created with beautiful colour combinations.

This can be offered with Cotton 20% / Polyester 80% blends. Customer can simply knit the fabric and do the washing process. Count can be offered from Ne 16/1 to Ne 50/1.





YARN QUALITY

MELANGE/HEATHER YARN



COUNT (Ne)

30/1



PROCESS

WASHING



BLEND

COTTON 20%/POLYESTER 80%

SCSM 22414



SCSM 22415



SCSM 22416





FLURRY LOOK

Droplets

Created clean droplet on same shade contrast base which gives fresh look with Cotton/polyester blends.

This can be offered with Cotton 60% / Polyester 40% and Cotton 50% / Polyester 50% blends. Customer can simply knit the fabric and do the washing process. Count can be offered Ne 16/1 to Ne 40/1.





YARN QUALITY

MELANGE/HEATHER YARN



COUNT (Ne)

30/1



PROCESS

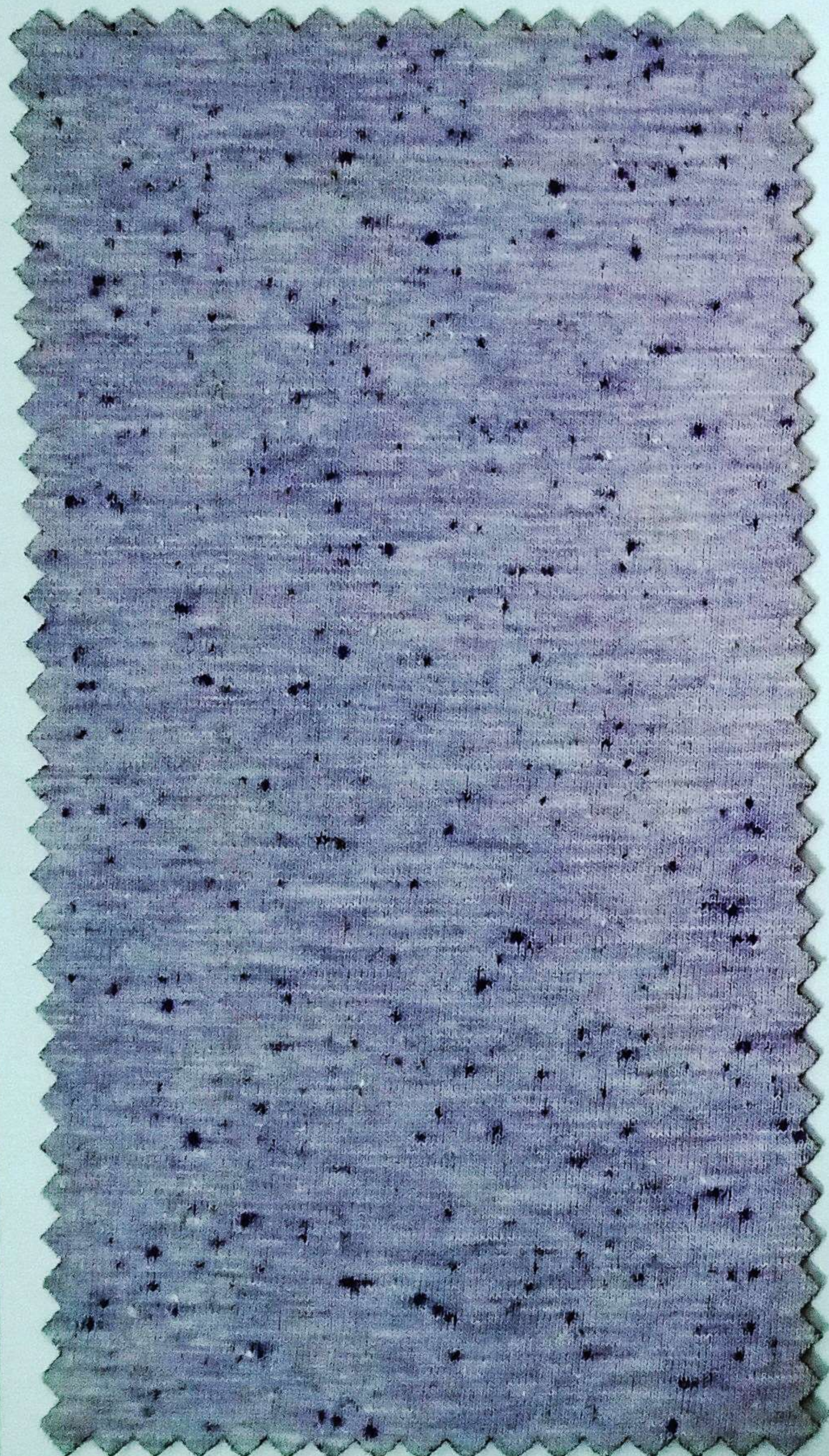
WASHING



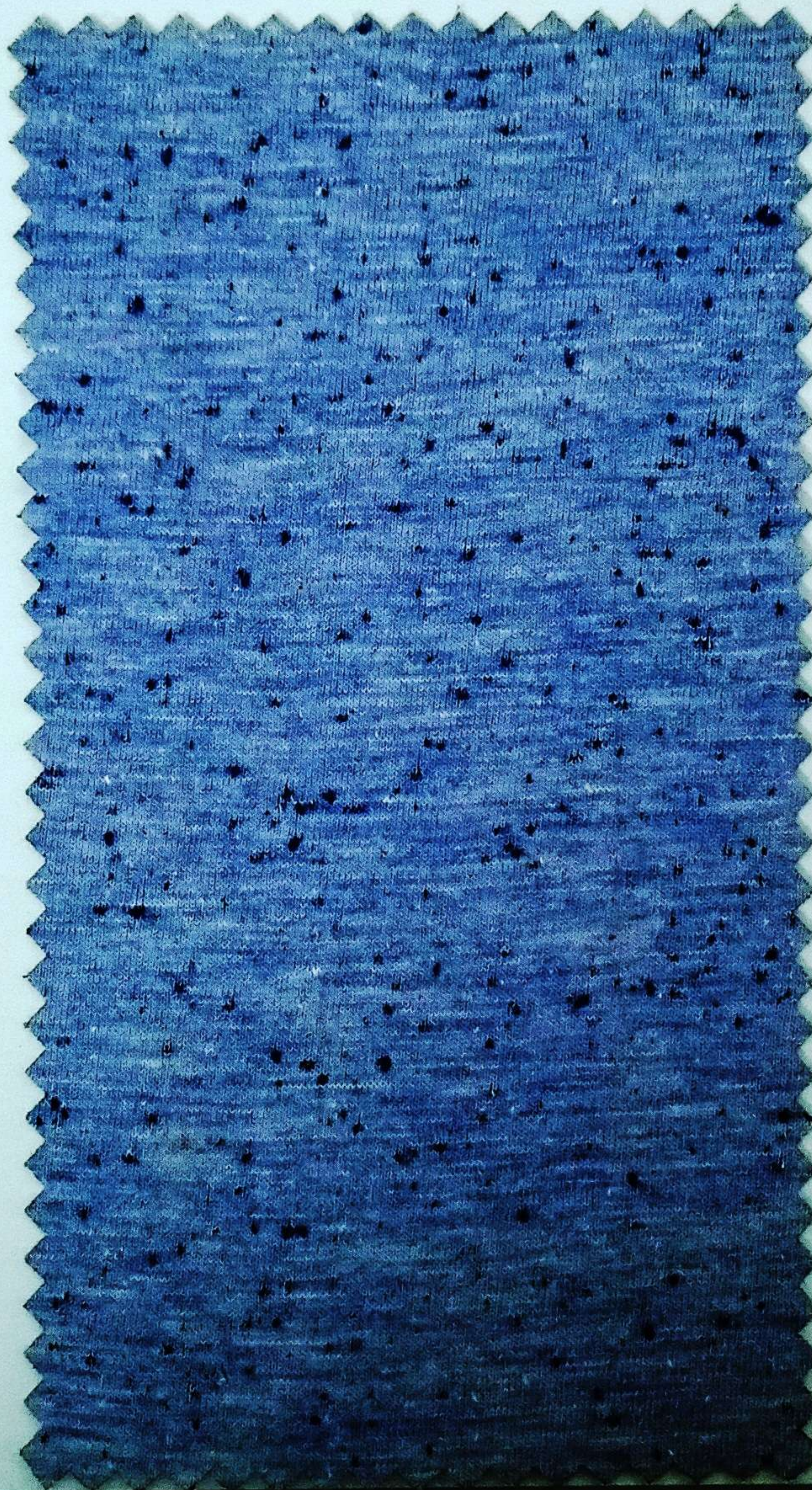
BLEND

COTTON 50%/POLYESTER 50%

SCSM 22417



SCSM 22418



SCSM 22419

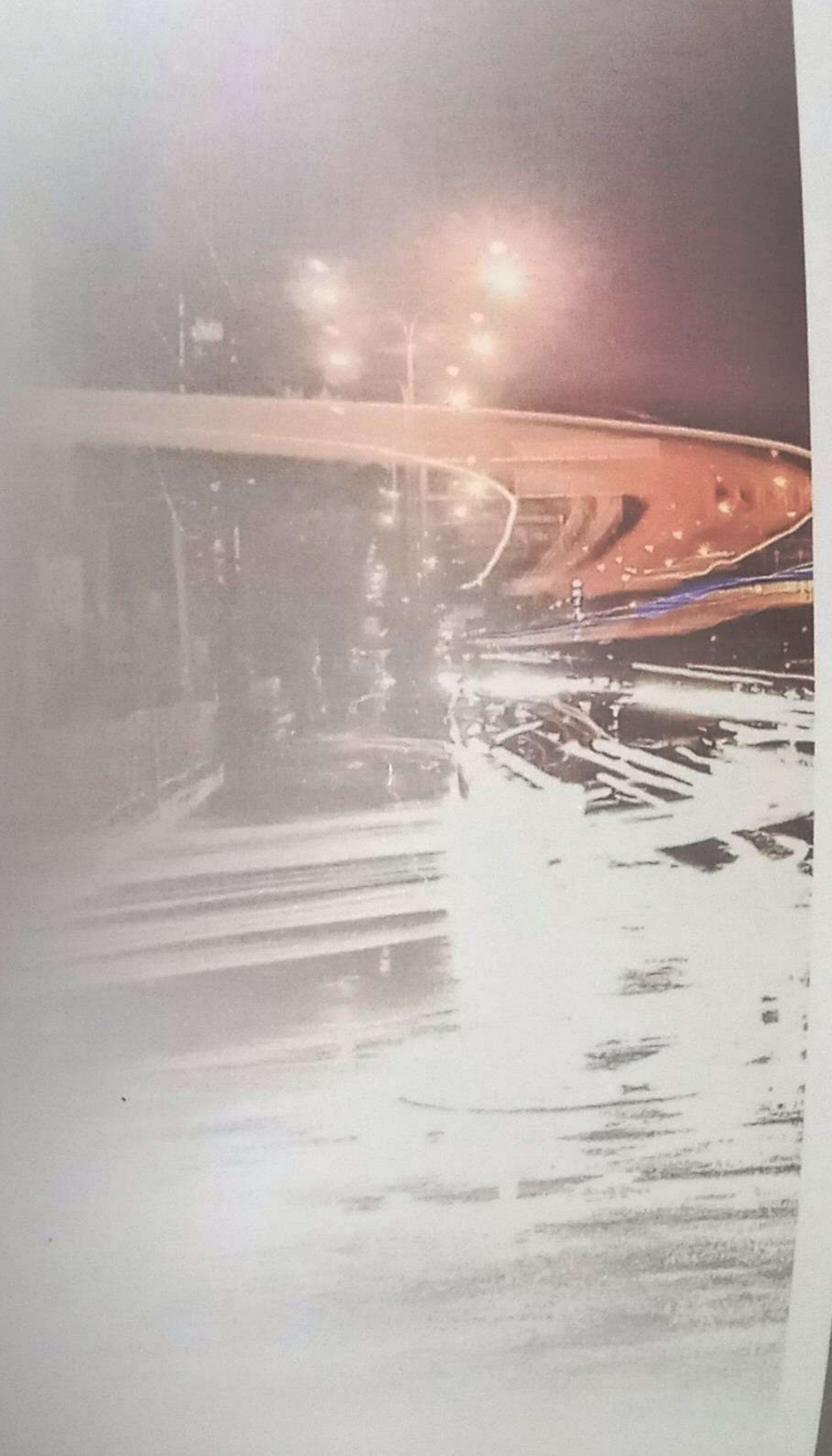


LONG CLUSTERS

SINGLE COLOR STREAKS

Created vibrant, elegant long streak with single colour looks.

This can be offered with Cotton 60% / Polyester 40% and Cotton 50% / Polyester 50% blends. Customer can simply knit the fabric and do the washing process. Count can be offered from Ne 20/1 to Ne 40/1.





YARN QUALITY

MELANGE/HEATHER YARN



COUNT (Ne)

30/1



PROCESS

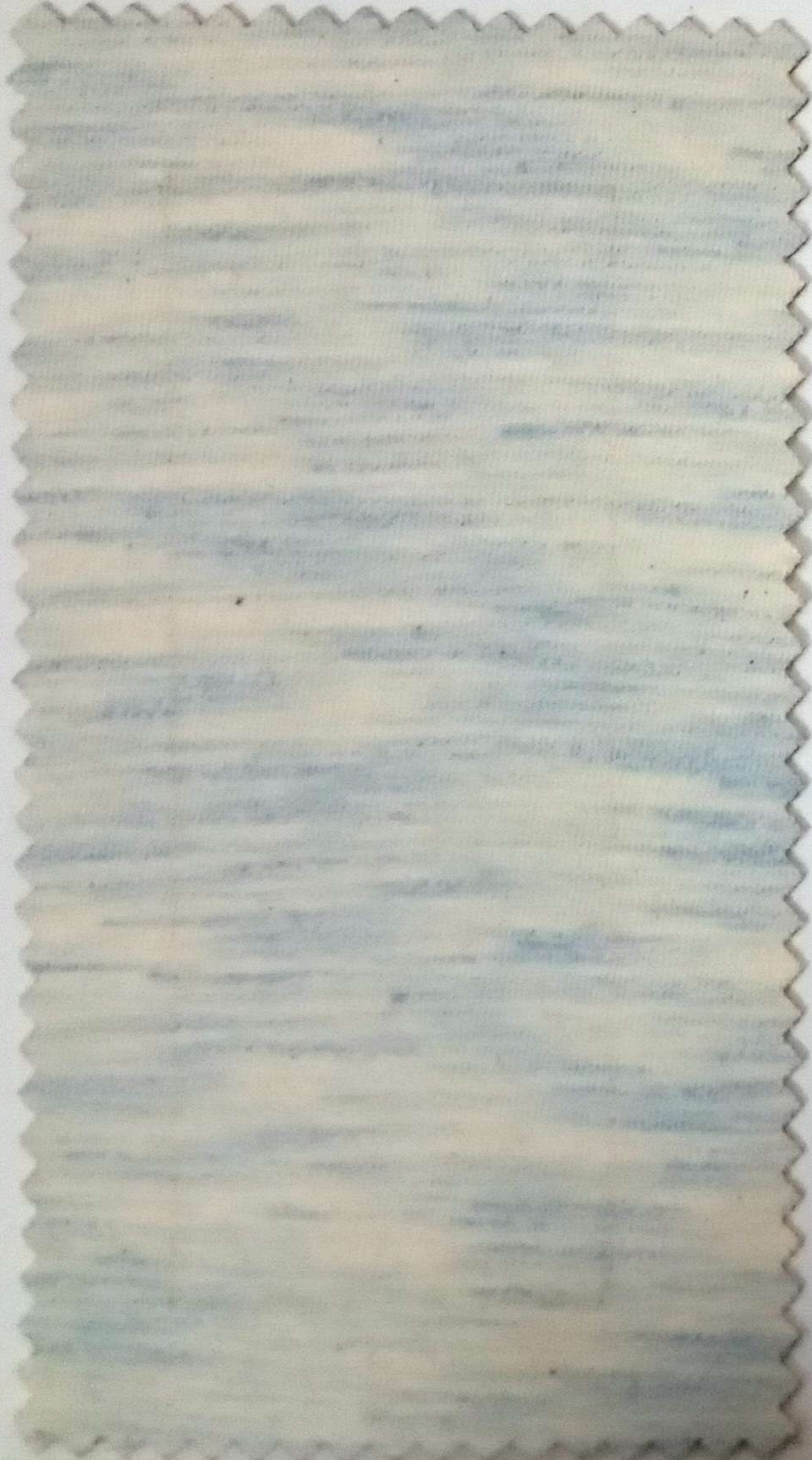
WASHING



BLEND

COTTON 60%/POLYESTER 40%

SCSM 22420



SCSM 22421



SCSM 22422



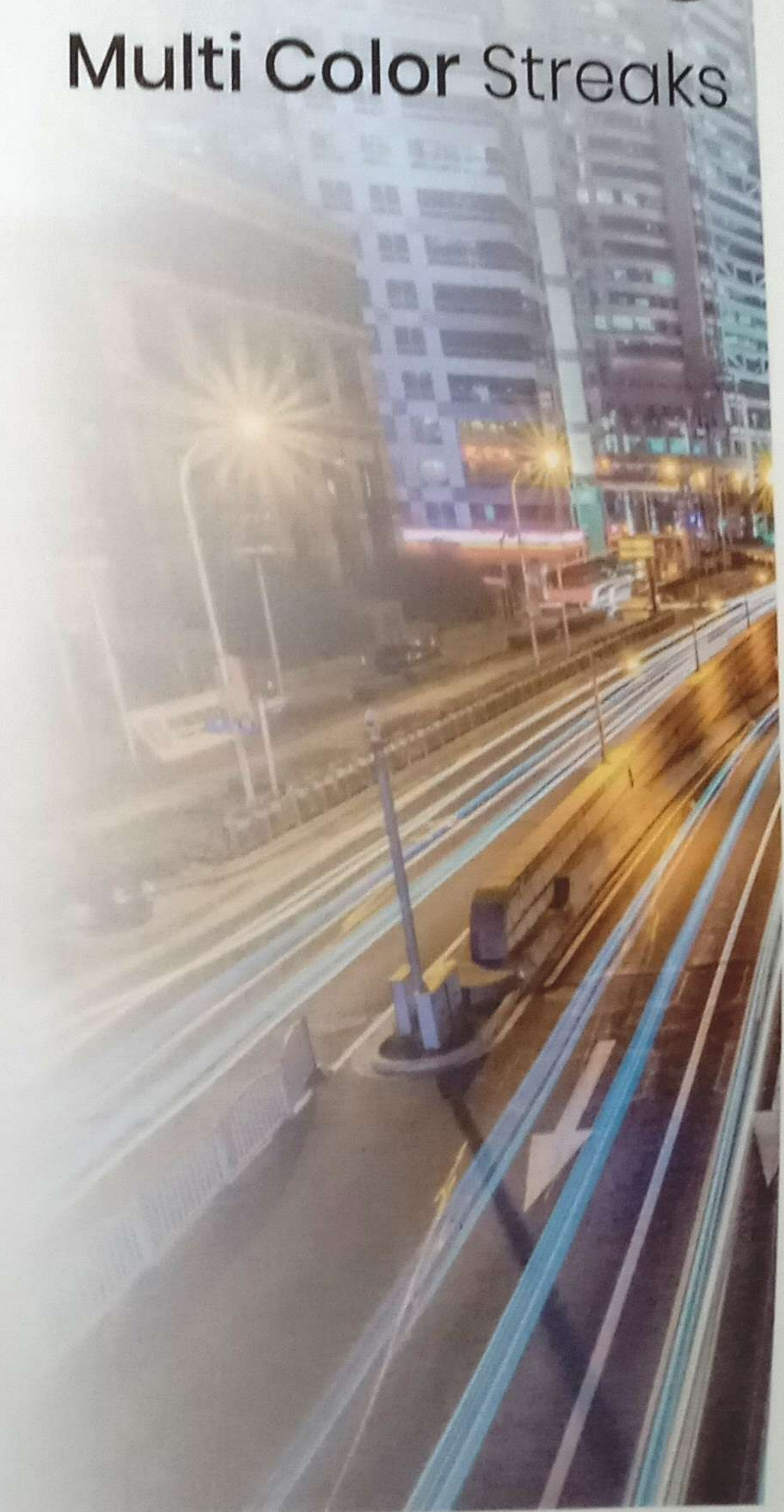


LONG CLUSTERS

Multi Color Streaks

Created vibrant, elegant long streak with multi colour looks.

This can be offered with Cotton 60% / Polyester 40% and Cotton 50% / Polyester 50% blends. Customer can simply knit the fabric and do the washing process. Count can be offered from Ne 20/1 to Ne 40/1.





YARN QUALITY

MELANGE/HEATHER YARN



COUNT (Ne)

30/1



PROCESS

WASHING



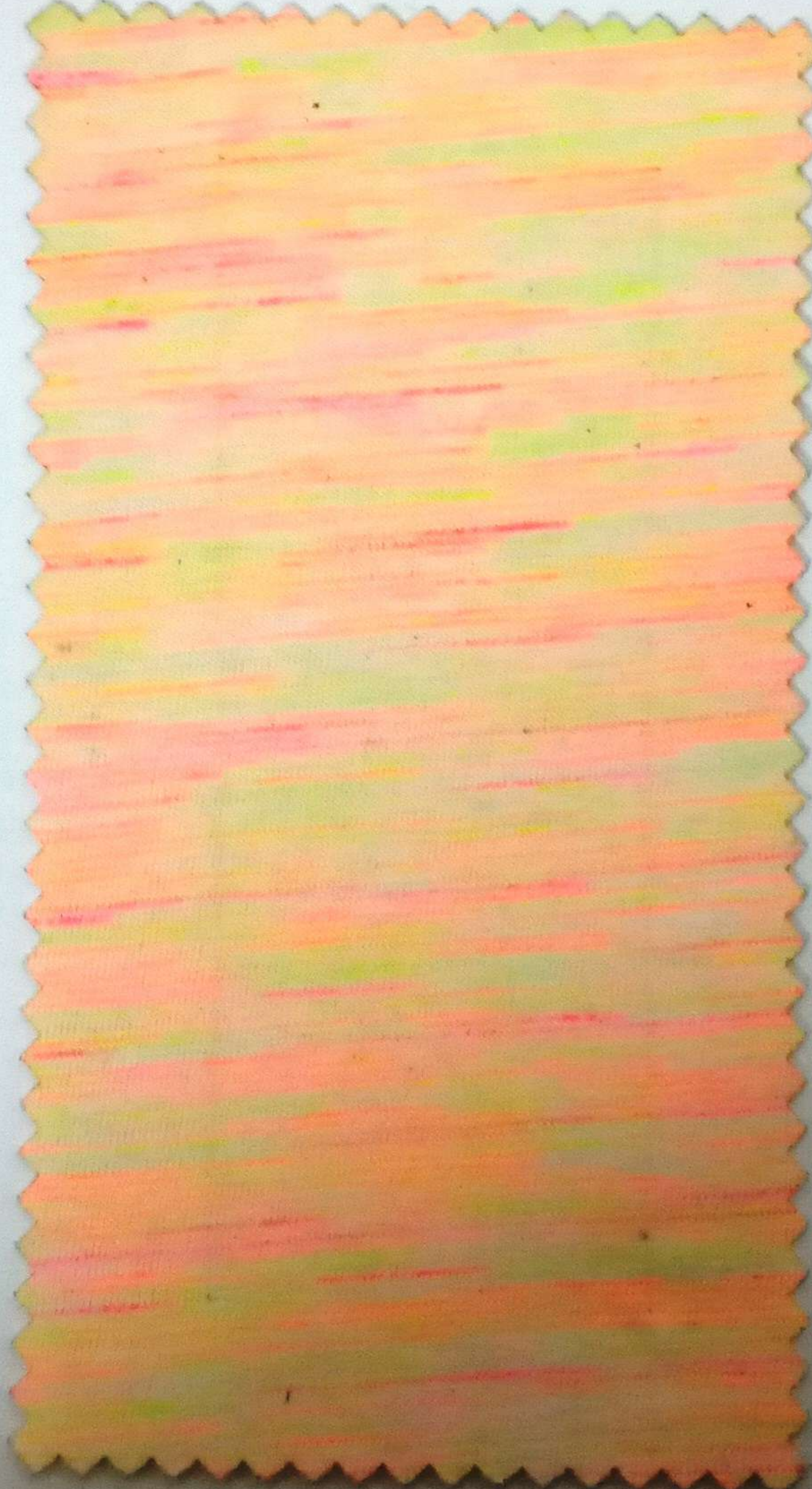
BLEND

COTTON 50%/POLYESTER 50%

SCSM 22423

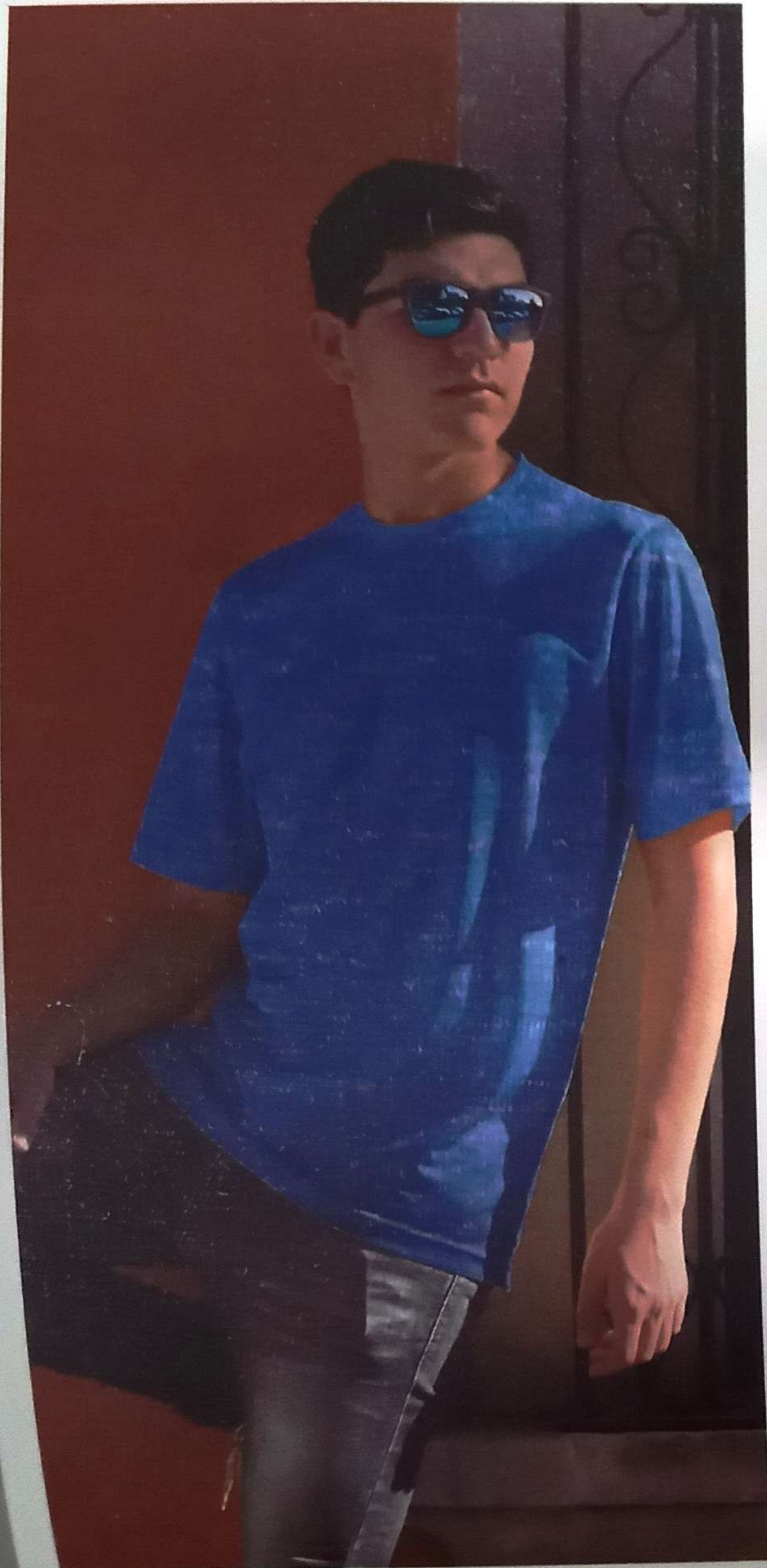


SCSM 22424



SCSM 22425



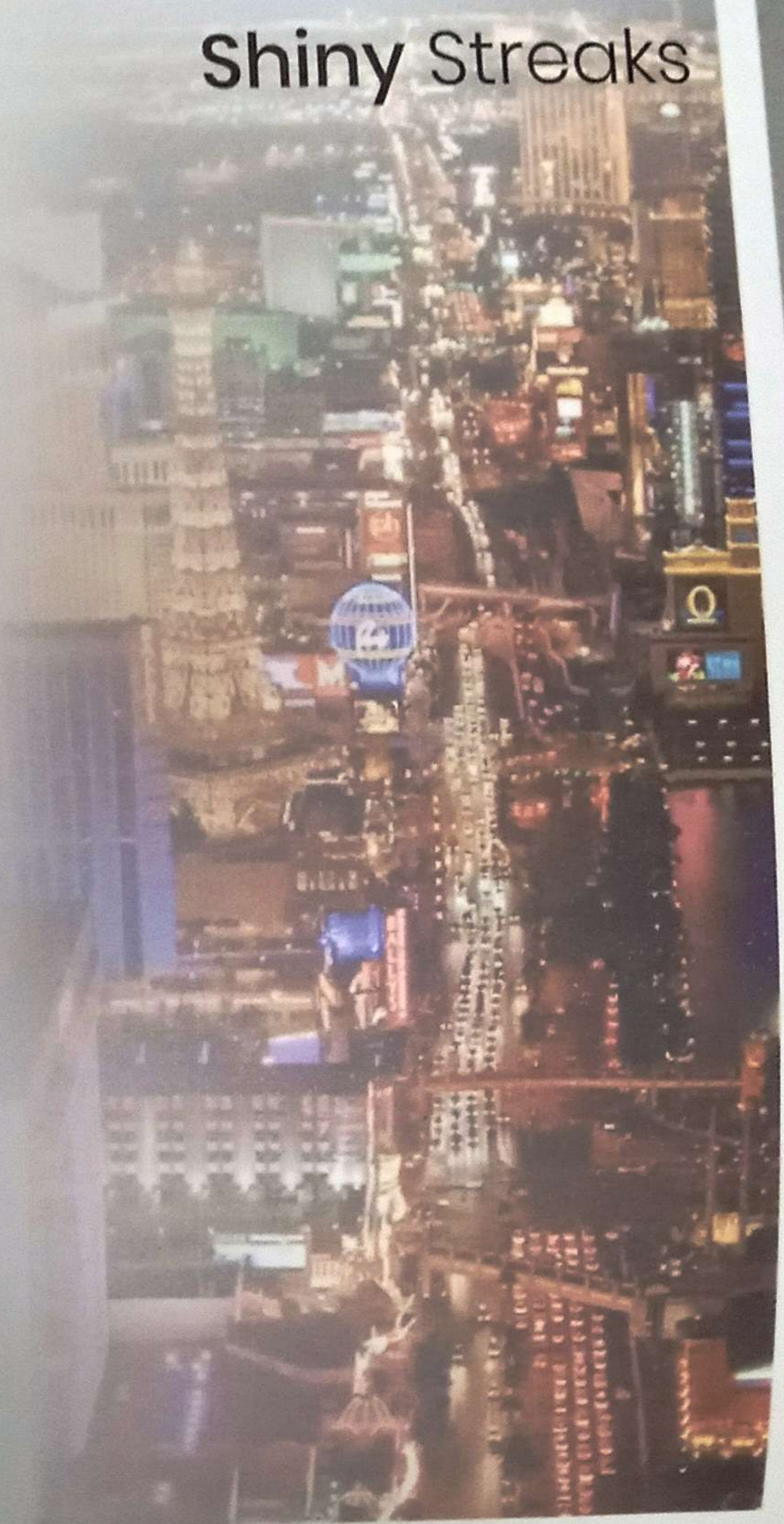


MULTI NEON

Shiny Streaks

Blinks like a shiny streaks in the UV light which gives vibrant look for party wears. We created this product for not only sport wear but even for casual wears.

This can be offered with Cotton 60% / Polyester 40 % and Polyester rich blends. Customer can simply knit the fabric and do the washing process. Count can be offered Ne 20/1 to Ne 40/1.





YARN QUALITY

MELANGE/HEATHER YARN



COUNT (Ne)

30/1



PROCESS

WASHING



BLEND

COTTON 60%/POLYESTER 40%

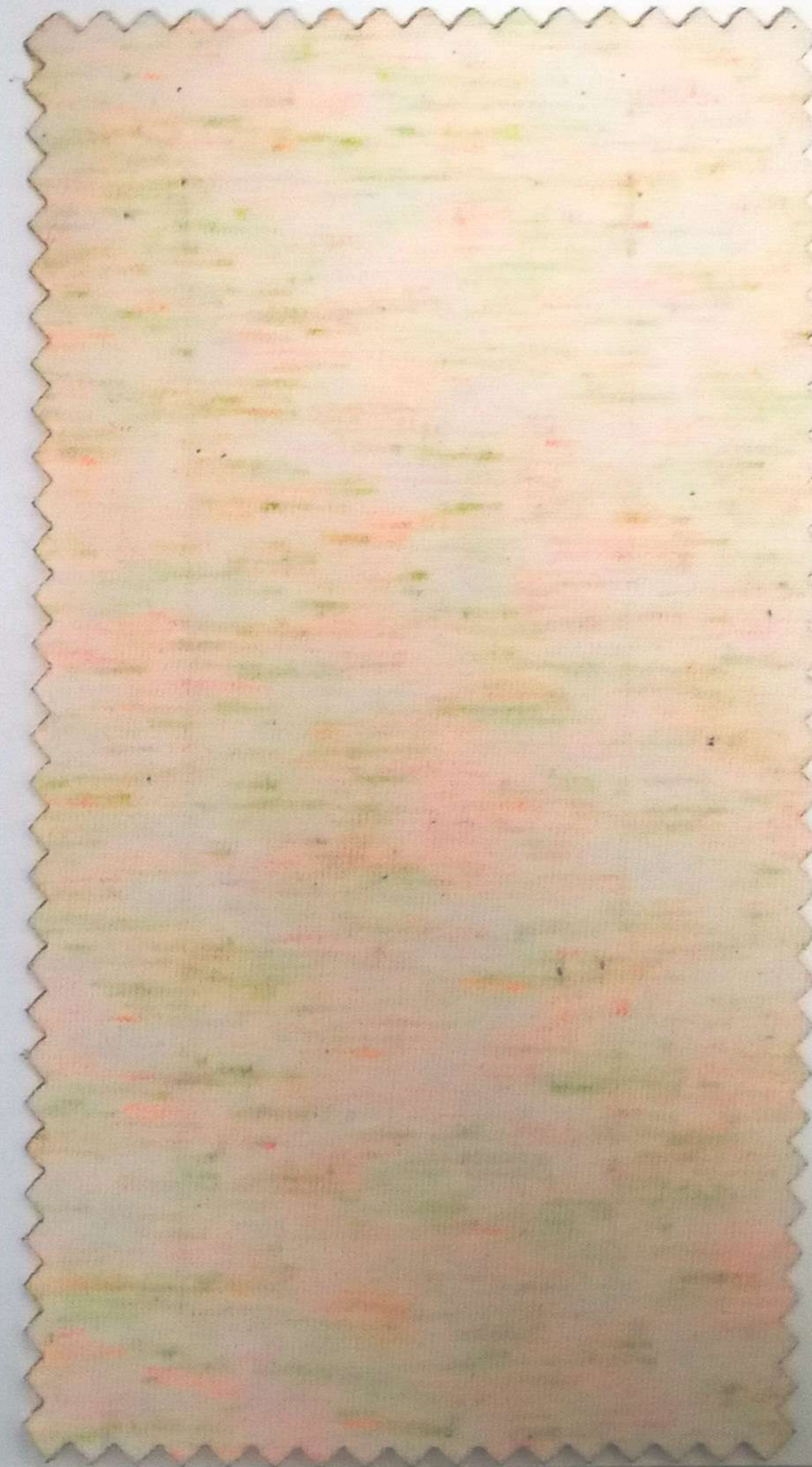
SCSM 22426



SCSM 22427



SCSM 22428

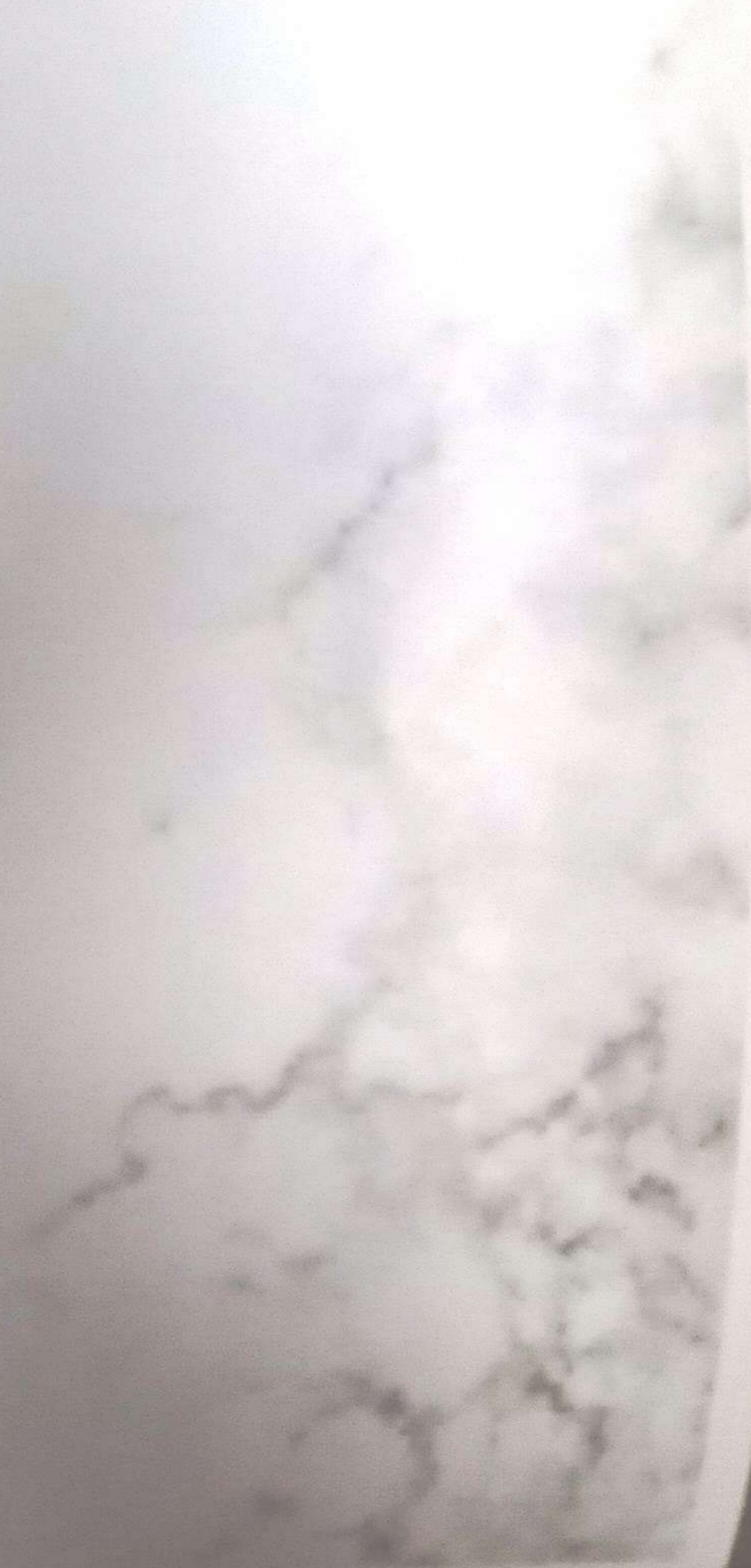
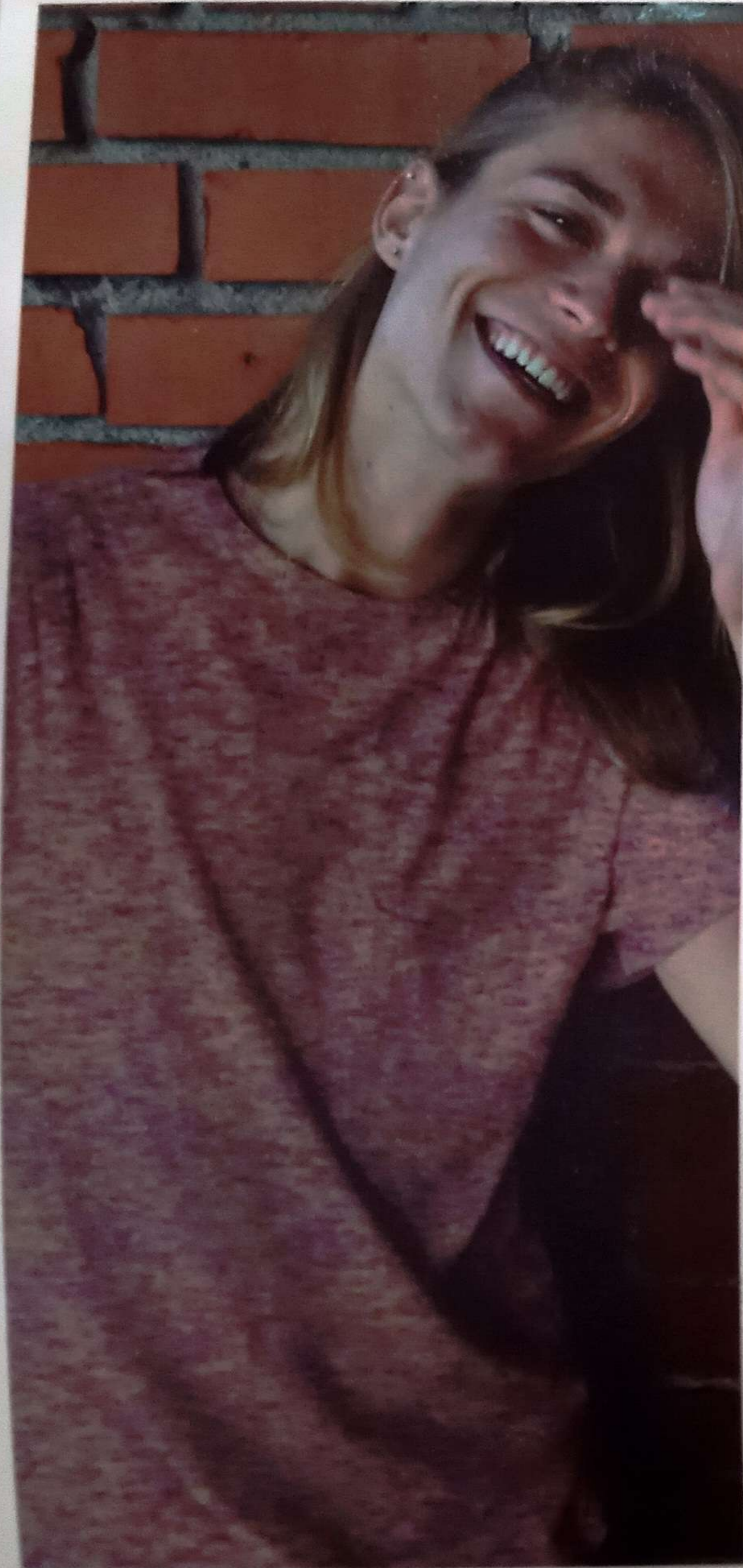


MURMEL

Marble Textures

Created a beautiful marble textures which gives elegant look on the fabric with ecru and light contrast shades base.

This can be offered with Cotton 60 % / Polyester 40%, Cotton 50% / Polyester 50% and Cotton 90% / Polyester 10% blends. Both Cotton 60% / Polyester 40% and Cotton 50% / Polyester 50% customer can simply knit the fabric and do the washing process. Customer can make their self shades on the base by over dyeing cotton with Cotton 90% / Polyester 10% fabric. Count can be offered Ne 16/1 to Ne 40/1.





YARN QUALITY

MELANGE/HEATHER YARN



COUNT (Ne)

30/1



PROCESS

WASHING



BLEND

COTTON 60%/POLYESTER 40%

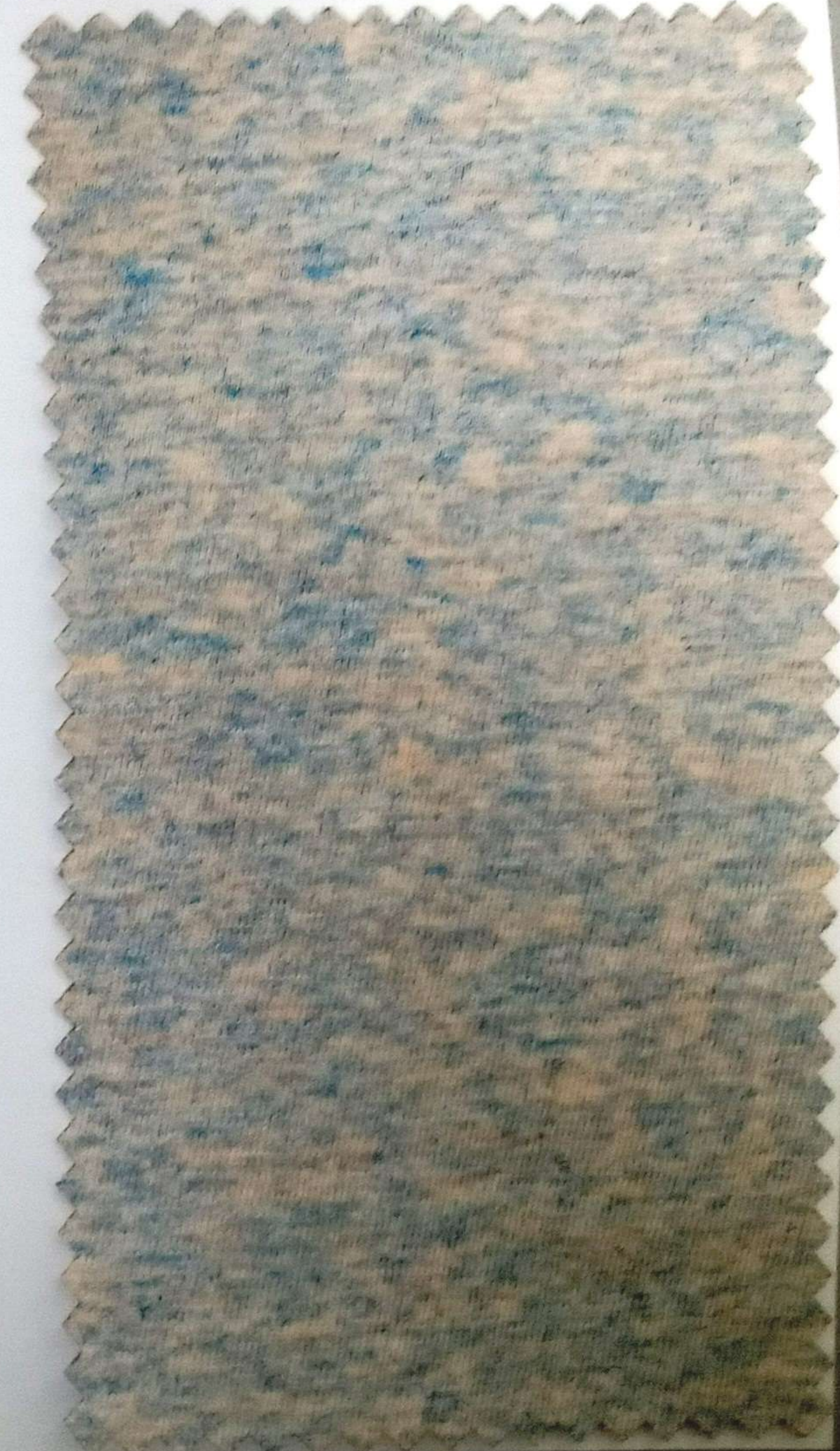
SCSM 22429

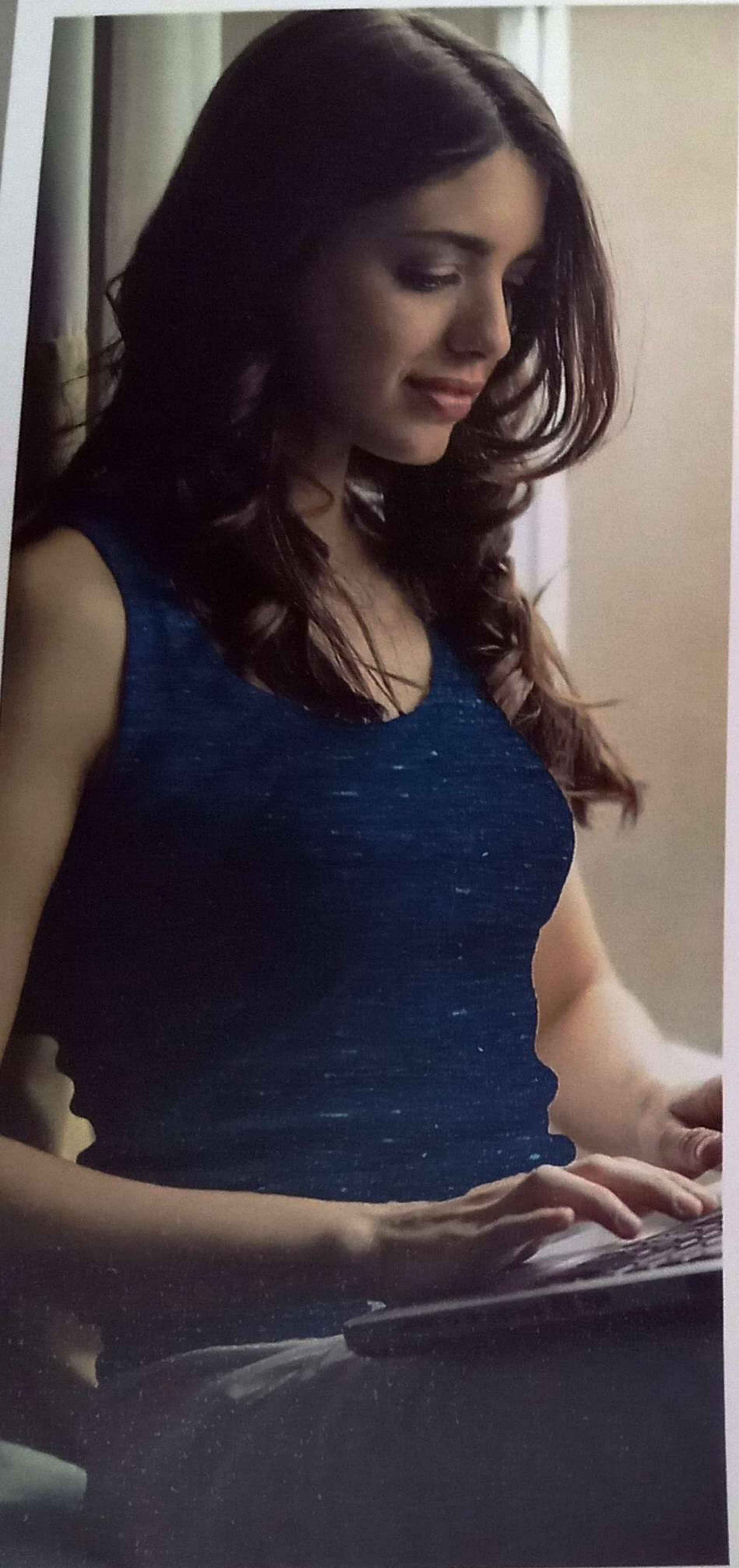


SCSM 22430



SCSM 22431





SERPENTINE

Non Cotton

Created a mixture of minerals which gives dancing streak look appearance with non cotton fibres for Girls/ Female knitted garments.

This can be offered with 100% Viscose and Polyester / Viscose blends. Customer can simply knit the fabric and do the washing process. Count can be offered Ne 16/1 to Ne 40/1.





YARN QUALITY

MELANGE/HEATHER YARN



COUNT (Ne)

30/1



PROCESS

WASHING



BLEND

100% VISCOSE

SCSM 22432



SCSM 22433



SCSM 22434



SMOCK LOOK

Vibrant

Created with mixtures of shades which gives vibrant image on the surface of the fabric.

This can be offered with natural cotton blended with polyester fibres. We shall offer these yarns in Cotton 90% / Polyester 10%, Cotton 60% / Polyester 40% and Cotton 50% / Polyester 50%. Customer can simply dye the base on Cotton 90% / Polyester 10% with choice of their shades , and just washing process on Cotton 60% / Polyester 40% and Cotton 50% / Polyester 50% blends. Count can be offered from 16/1 Ne to 34/1 Ne.





YARN QUALITY

MELANGE/HEATHER YARN



COUNT (Ne)

30/1



PROCESS

WASHING



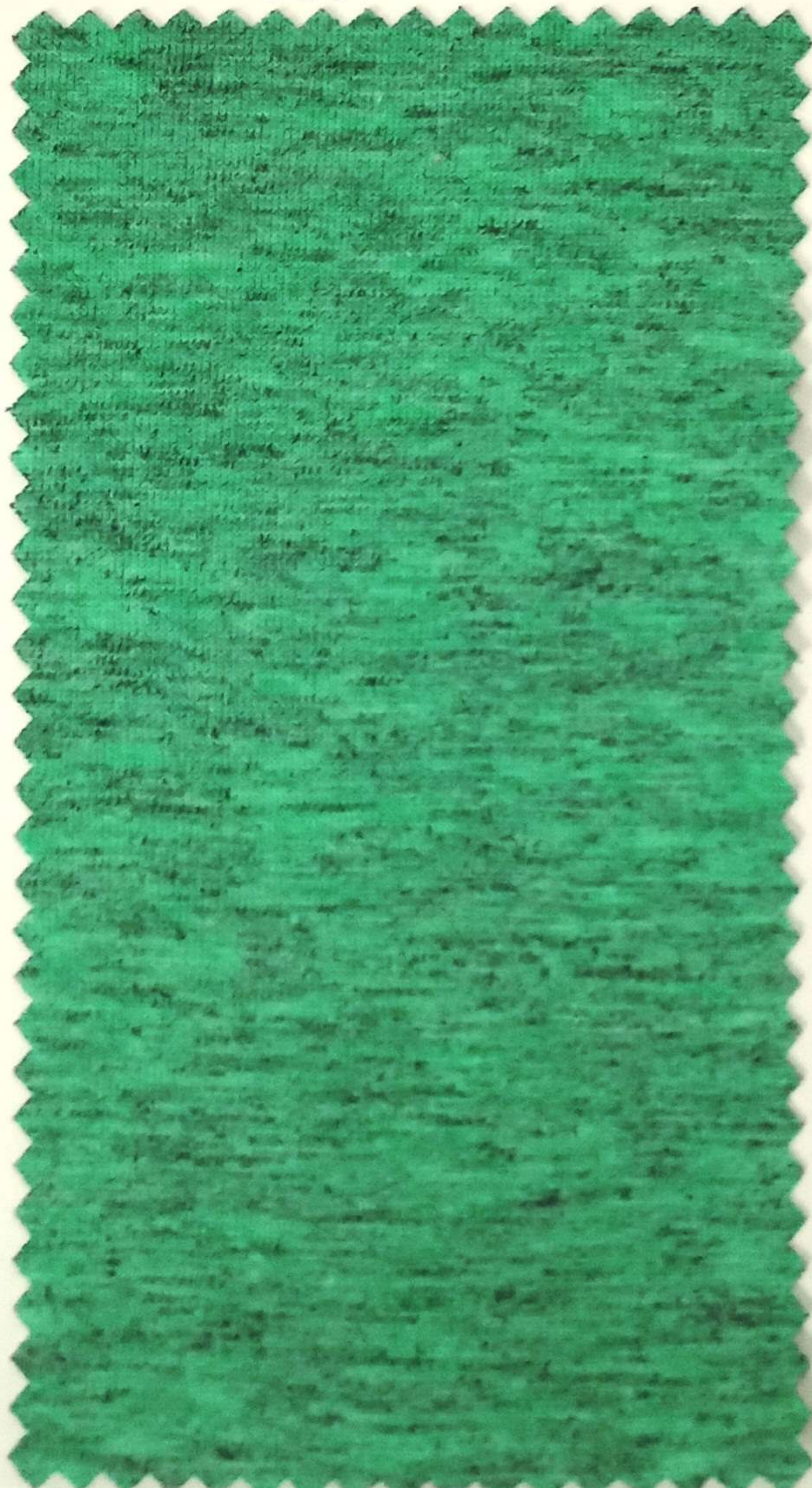
BLEND

COTTON 50%/POLYESTER 50%

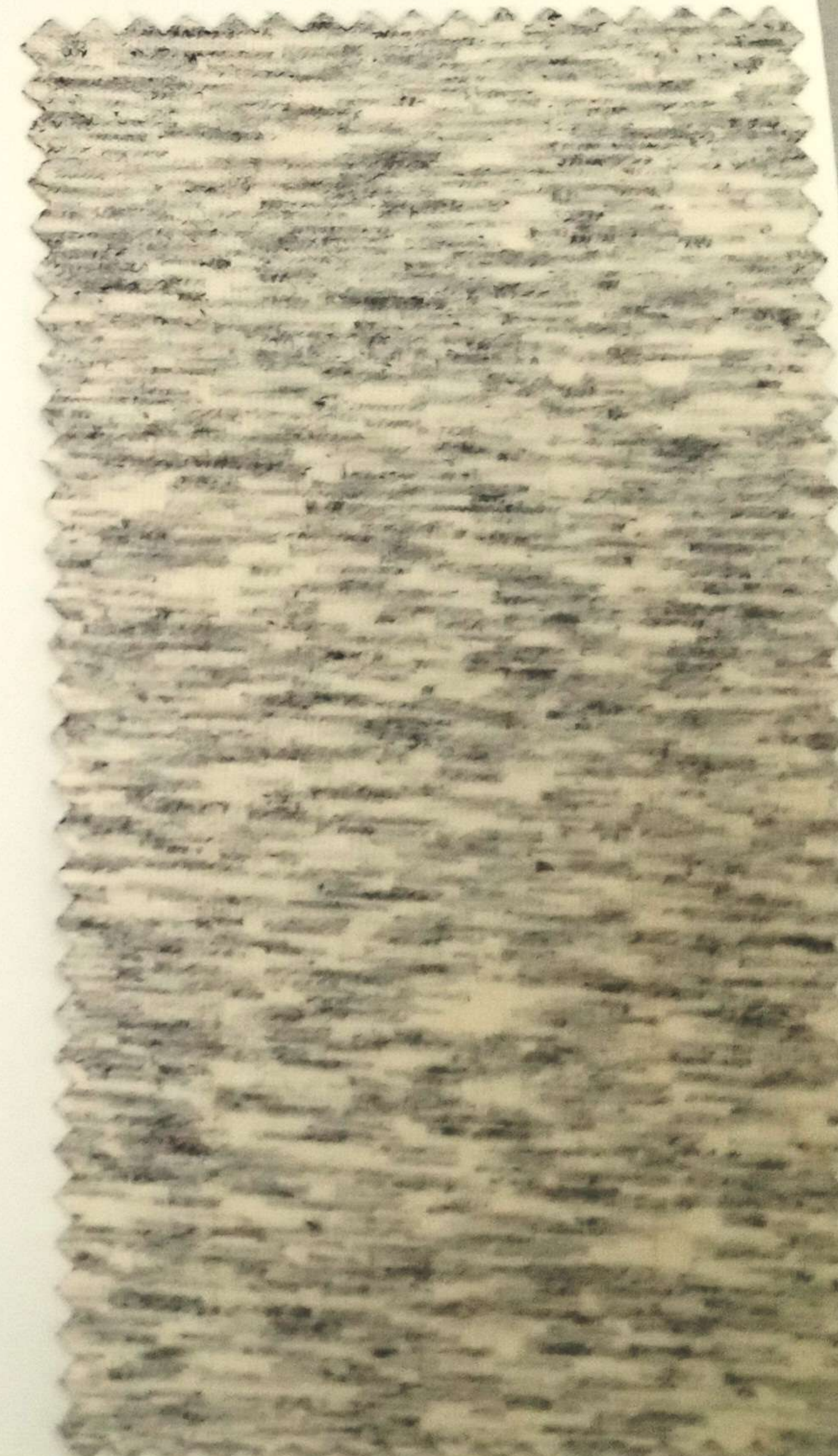
SCSM 22435



SCSM 22436



SCSM 22437



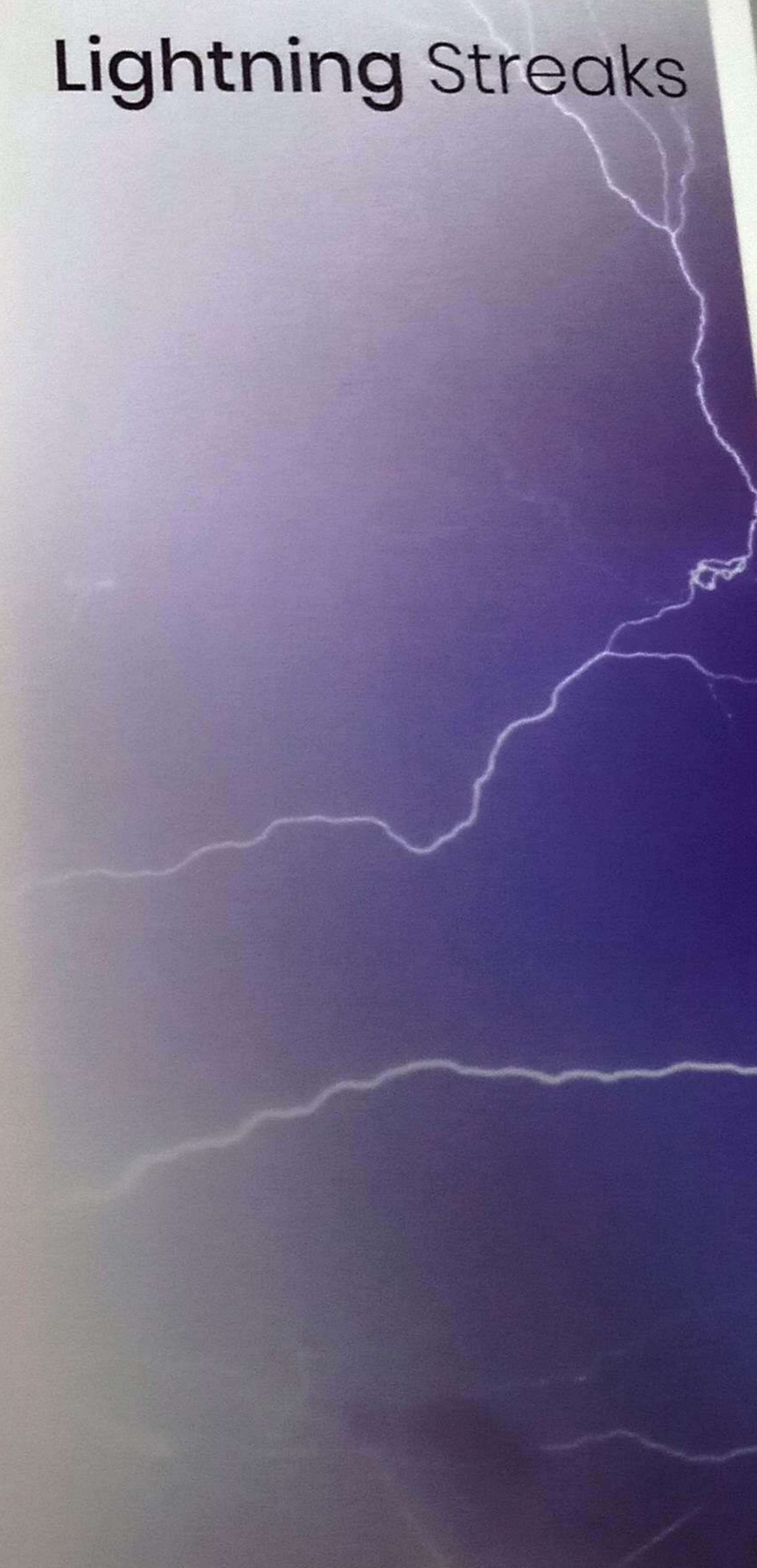


SPACE DYED LOOK

Lightning Streaks

Created streaks of lightning which flashes in the sky with natural fibres.

This can be offered with 100% Cotton. Customer can simply dye the shades as per their requirements following our special recipe for dyeing process. Count can be offered Ne 16/1 to Ne 50/1.





YARN QUALITY

RAW WHITE YARN



COUNT (Ne)

30/1



PROCESS

DYEING



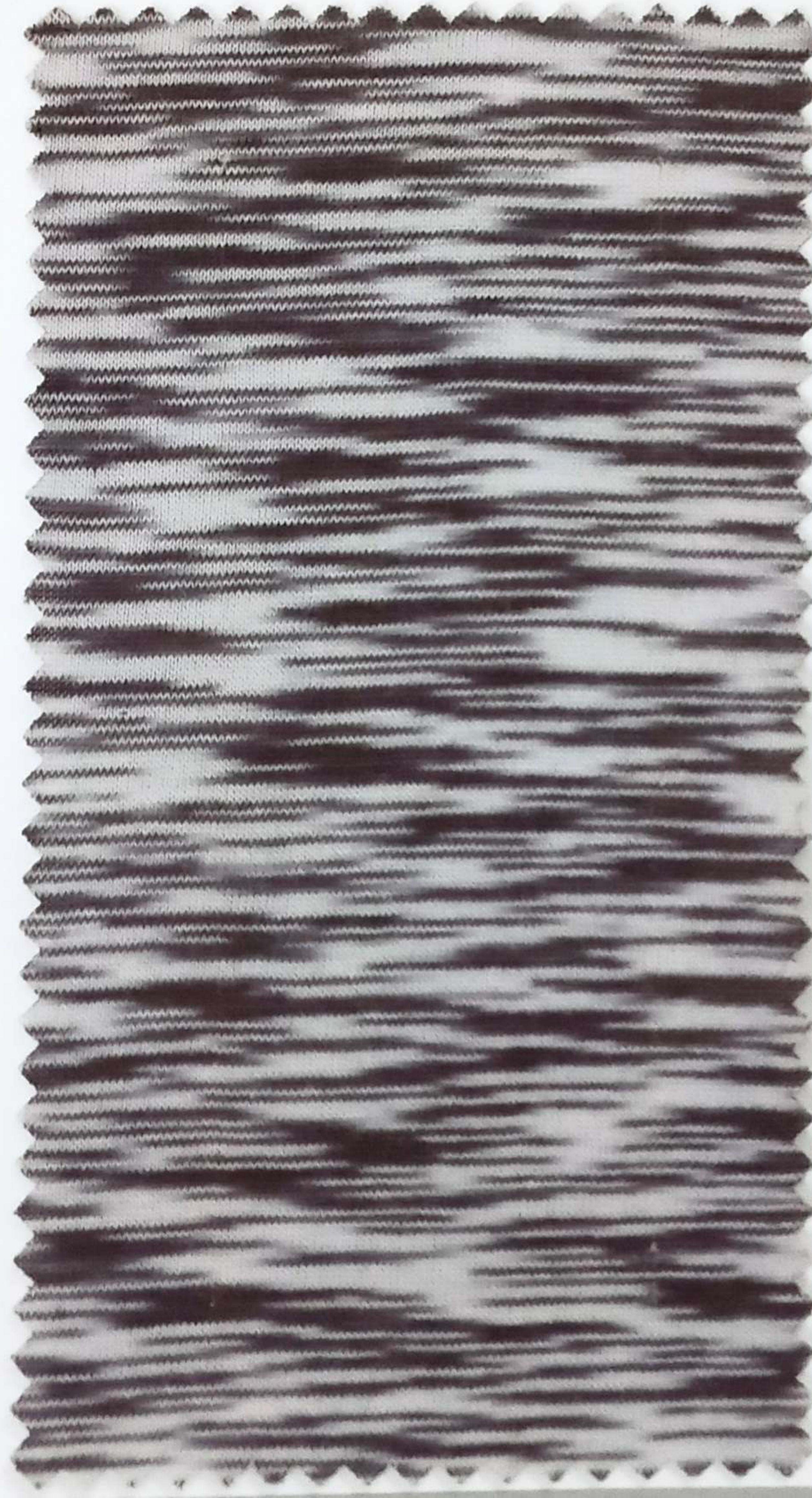
BLEND

100% COTTON

SCSM 22438



SCSM 22439



SCSM 22440



CERTIFICATION

and Research & Development



Quality & Certification:

Sulochana Quality has been acknowledged by our valuable customers and by eminent certifying bodies. Sulochana aims to maintain stringent and consistent quality parameters of our products by testing the fibres in state of art high technology laboratories. Sulochana strives hard to make sure the customers are ensured of consistent quality and we are very flexible in order to match customers' requirement, Specification and Satisfaction.

Research & Development:

At Sulochana the R&D wing works meticulously on new developments realizing at least one development every week. We understand our strength lies in the value added section of garment yarn and we are now in the process of adding to our existing developments and shades of fancy yarn. In addition to the new developments, we have widened the range of existing shades in the generic category. We benefit from having our own polyester fibre and dyeing units and this availability and readiness of raw material and infrastructure enables Sulochana to match customer's needs in a very short lead time. Our teams are skilled and capable of matching any shade, colour at development and delivering samples within a short span of 7-10 days. Similarly in the polyester side, we attempt to bring new and different types of fibres. We had already established the fibres such as flame retardant, cationic, high-tenacity easy-dyeable and etc. And these developments provide benefits in terms of design and processing further up in dyeing, spinning and garmenting. We are continuously lookout for new potential applications for our fibre and aim to create distinguished market for those types of fibres.





SULOCHANA COTTON SPINNING MILLS PVT. LTD.

424, 426, Kamaraj Road, Tirupur - 641 604,
Tamil Nadu, INDIA.

sales@sulochanamills.in / exports@sulochanamills.in

www.sulochanamills.in

